

## The State of Afterschool Symposium Summary of Findings

### *Afterschool Alliance: Allegheny County America After 3PM*

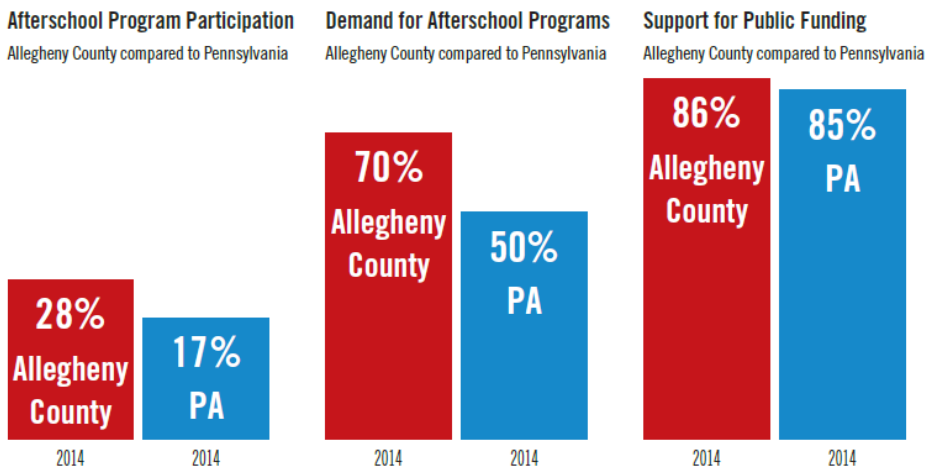
#### Afterschool participation

- Afterschool participation is higher than both Pennsylvania and the national average with nearly 3 in 10 children in Allegheny County (28 percent) participate in an afterschool program. This is 11 percentage points higher than Pennsylvania (17 percent) and 10 percentage points higher than the national average (18 percent).
- Unmet demand for afterschool programs is high when looking at children who are not currently enrolled in an afterschool program, 70 percent would be enrolled in an afterschool program if one were available to them. This is significantly higher than both the state percentage (50 percent) and the national average (41 percent).

#### Parent sentiment

- 6 out of 7 Allegheny County parents (86 percent) support public funding for afterschool programs.
- Allegheny County parents are more likely to cite their child's accessibility of afterschool programs and various undesirable qualities (access to healthy meals, physical activity, and support for students with special needs) as factors for not enrolling and less likely to cite cost as a barrier.
- Two-thirds of Allegheny parents reported that safe transportation to and from the program was a very important factor in their decision not to enroll in an afterschool program.

### OVERALL DEMAND FOR AFTERSCHOOL PROGRAMS

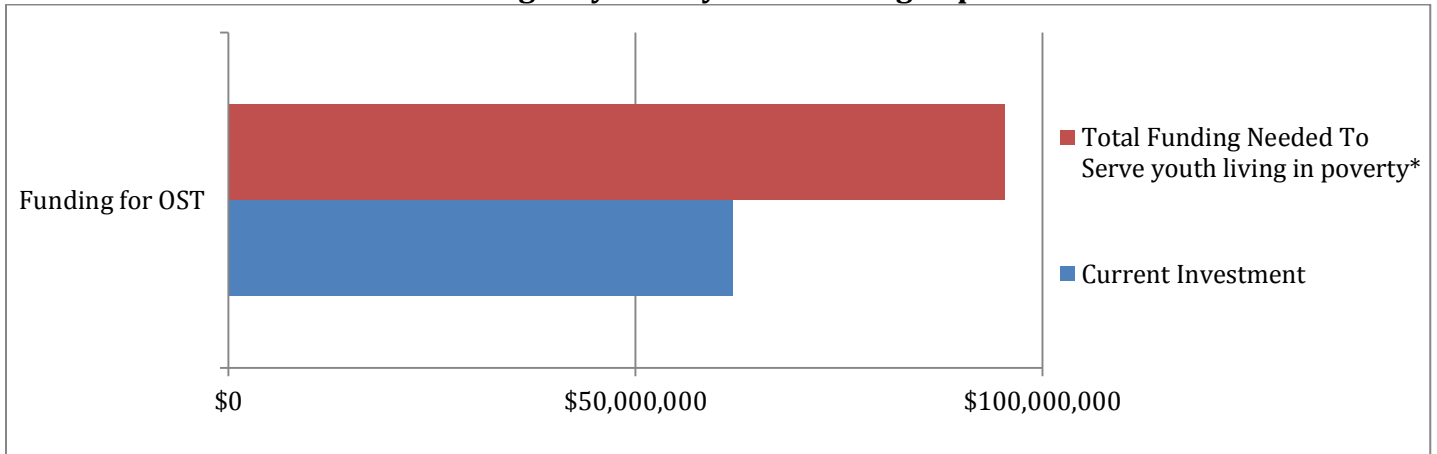


**18%**  
of children are unsupervised after school in 2014 for an average of 2.94 hours per week.

**University of Pittsburgh Office of Child Development:  
Allegheny County Out-of-School Time (OST) Funding Inventory**

- \$62,030,845 was distributed during fiscal year 2012/13 throughout Allegheny County in support of OST initiatives.
- 78.4% was provided by federal and state legislation. This amount came from 11 government-sponsored funding streams, principally the Child Care Works program, which accounted for 52 % of the government funding
- It is estimated that \$95,410,000 would be needed to serve the number of youth in poverty (27,260) or an estimated gap of \$33,379,155 to serve the youth most in need.\*

**Allegheny County OST Funding Gap\***



\*census data for children living in poverty

**Emily Morse, M.S./M.S.W.: Current Trends and Future Directions for Quality OST Programming in Allegheny County**

**Survey of Quality OST Providers in Allegheny County**

- OST programming is commonly available for ages 5-12, but less available for 13-19 year-olds.
- In Allegheny County, quality programs locations are aligned and responsive to the school-age youth demographic

**Overall OST Service Gap:** Based on all estimates, Allegheny County OST programs serve 28% of Allegheny County’s school-age population

